

XTREME BOATS

LIGHTER, STRONGER, FASTER
FOR THE HIGHEST PERFORMANCE

TOTAL PERFORMANCE REPORT

WWW.XTREMEBOATS.COM

850-547-9500

TEST DAY DATA

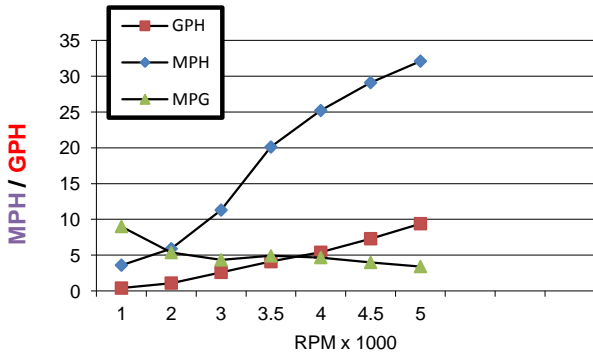
Test Date	Jun-14
Test Conductor(s)	BH
Boat Weight As Tested	2020
Air Temperature	92F
Elevation	75'
Wind Velocity	3
Fresh/Salt Water	Fresh
Weight of Persons/Ballast during Test	275



PERFORMANCE SUMMARY

Top Speed (MPH @ RPM)	32.1
Acceleration 0 - 10 MPH (Seconds)	2.7
Acceleration 0 - 20 MPH (Seconds)	5.4
Acceleration 0 - 30 MPH (Seconds)	13.5
Best Fuel Efficiency (MPG @ MPH)	4.9 @ 20.1 MPH

PERFORMANCE CURVE



PERFORMANCE DATA

RPM	SPEED	FUEL	FUEL
x 1000	MPH	GPH	MPG
1	3.6	0.4	9.0
2	5.9	1.1	5.4
3	11.3	2.6	4.3
3.5	20.1	4.1	4.9
4	25.2	5.4	4.7
4.5	29.1	7.3	4.0
5	32.1	9.4	3.4
Planes at 3100 RPM			
Range = 122.5 Miles at Cruise			

ENGINE SPECIFICATIONS

Engine	Mercury 80	OptiMax Jet
Horsepower	80	
Cylinders	3	
Gear Ratio	1.00	

BOAT SPECIFICATIONS

Boat Model	XT 2072 CC Jet
Bottom Style	V (6.5 Degrees Deadrise)
Material	Welded Aluminum
Length	20'
Beam	96"
Bottom Width	72"
Hull Bottom Thickness	0.190" (3/16") Aluminum
Max HP Capacity	200HP
Fuel Tank	25G
Steering Type	Rotary/Wheel
Dry Boat Weight	1250
Transom Height	30"

No Jackplate / Mounted 3rd Hole

PROPELLER SPECIFICATIONS

Brand	Impeller Driven
Model	
Material	SS
Diameter/Pitch	
Number of Blades	4

Performance Calculations

Propeller Slippage at WOT	
Hull Factor (Efficiency)	161.2
Higher = More Efficient	

Xtreme Industries 1326 Old Ridge Road Bonifay, FL 32425

Results on individual boats may vary depending on many factors, including weather and the condition of propeller, lower unit and boat bottom.

850-547-9500 XtremeBoats.com