

XTREME BOATS

TOTAL PERFORMANCE REPORT

LIGHTER, STRONGER, FASTER
FOR THE HIGHEST PERFORMANCE

WWW.XTREMEBOATS.COM

850-547-9500

TEST DAY DATA

Test Date	Oct-14
Test Conductor(s)	BSH
Boat Weight As Tested	1395
Air Temperature	66F
Elevation	160
Wind Velocity	8MPH
Fresh/Salt Water	Fresh
Weight of Persons during Test	190 (1 Person)



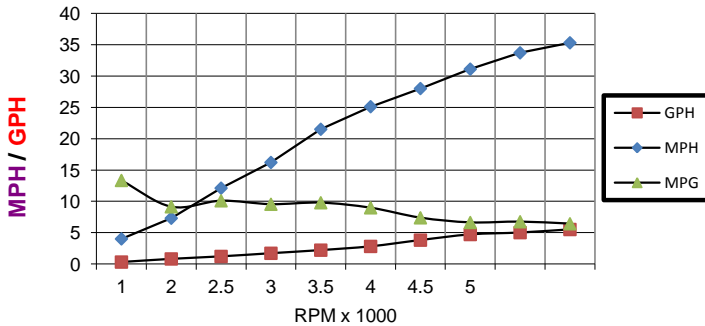
PERFORMANCE SUMMARY

Top Speed (MPH @ RPM)	35.3
Acceleration 0 - 10 MPH (Seconds)	N/T
Acceleration 0 - 20 MPH (Seconds)	N/T
Best Fuel Efficiency (MPG @ MPH)	10.0 @ 12.1MPH

ENGINE SPECIFICATIONS

Engine	Mercury 60	ELPT
Horsepower	60	
Cylinders	4	
Gear Ratio	1.83	

PERFORMANCE CURVE



BOAT SPECIFICATIONS

Boat Model	River Skiff 1660 SST
Bottom Style	Flat w Prop Tunnel
Material	Welded Aluminum
Length	16'4"
Beam	88"
Bottom Width	60"
Hull Bottom Thickness	0.190" (3/16")
Max HP Capacity	60 HP
Fuel Tank	Topside
Steering Type	Stick Steering
Dry Boat Weight	725
Transom Height	28"

PERFORMANCE DATA

RPM x 1000	SPEED MPH	FUEL GPH	FUEL MPG
1	4	0.3	13.3
2	7.3	0.8	9.1
2.5	12.1	1.2	10.1
3	16.2	1.7	9.5
3.5	21.5	2.2	9.8
4	25.1	2.8	9.0
4.5	28	3.8	7.4
5	31.1	4.7	6.6
5.5	33.7	5	6.7
6	35.3	5.5	6.4

Plane @ 2,500 RPM

PROPELLER SPECIFICATIONS

Brand	PowerTech
Model	SWC
Material	Stainless
Diameter/Pitch	10.25/13
Number of Blades	3

Performance Calculations

Propeller Slippage at WOT	12.50%
Hull Factor (Efficiency)	170.1
Higher = More Efficient	

Specialty Hull Notes

Maximum Lift at WOT	Cav. Plate 5" Above Tunnel
Maximum Lift for Planing	Cav. Plate 3" Above Tunnel

Xtreme Industries 1326 Old Ridge Road Bonifay, FL 32425

Results on individual boats may vary depending on many factors, including weather and the condition of propeller, lower unit and boat bottom.

850-547-9500 XtremeBoats.com