

# XTREME BOATS

LIGHTER, STRONGER, FASTER  
FOR THE HIGHEST PERFORMANCE

## TOTAL PERFORMANCE REPORT

WWW.XTREMEBOATS.COM

850-547-9500

### TEST DAY DATA

Test Date	Mar-14
Test Conductor(s)	BH
Boat Weight As Tested	1200
Air Temperature	73F
Elevation	60
Wind Velocity	14
Fresh/Salt Water	Fresh
Weight of Persons/Ballast during Test	185



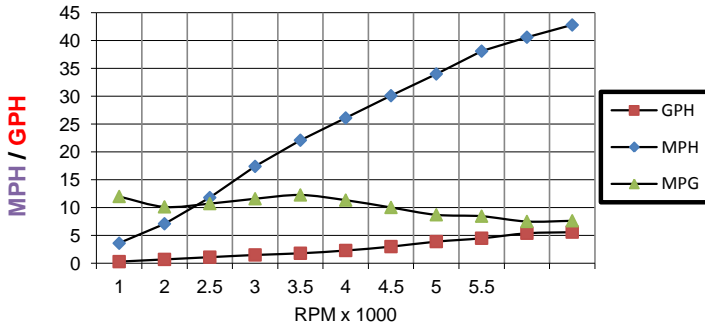
### PERFORMANCE SUMMARY

Top Speed (MPH @ RPM)	42.8
Acceleration 0 - 20 MPH (Seconds)	3.9s
Acceleration 0 - 30 MPH (Seconds)	6.9s
Best Fuel Efficiency (MPG @ MPH)	12.3 @ 21.1 mph

### ENGINE SPECIFICATIONS

Engine	Mercury 60	ELPT
Horsepower	60	
Cylinders	4	
Gear Ratio	1.83	

### PERFORMANCE CURVE



### PERFORMANCE DATA

RPM x 1000	SPEED MPH	FUEL GPH	FUEL MPG
1	3.6	0.3	12.0
2	7.1	0.7	10.1
2.5	11.8	1.1	10.7
3	17.4	1.5	11.6
3.5	22.1	1.8	12.3
4	26.1	2.3	11.3
4.5	30.1	3	10.0
5	34	3.9	8.7
5.5	38.1	4.5	8.5
6	40.6	5.4	7.5
6.1	42.8	5.6	7.6

### BOAT SPECIFICATIONS

Boat Model	River Skiff 1648 SS
Bottom Style	Flat w 4 Keels
Material	Welded Aluminum
Length	15'9"
Beam	67"
Bottom Width	48"
Hull Bottom Thickness	0.125" Aluminum (1/8")
Max HP Capacity	60HP
Fuel Tank	Topside
Steering Type	Stick Steering
Dry Boat Weight	595
Transom Height	22"

### PROPELLER SPECIFICATIONS

Brand	Mercury
Model	Vengeance
Material	SS
Diameter/Pitch	10.38/15
Number of Blades	3

### Performance Calculations

Propeller Slippage at WOT	9.60%
Hull Factor (Efficiency)	191.4
Higher = More Efficient	

Plane @ 2,600 6,100 Trimmed out to Maximum

Xtreme Industries 1326 Old Ridge Road Bonifay, FL 32425

Results on individual boats may vary depending on many factors, including weather and the condition of propeller, lower unit and boat bottom.

850-547-9500 XtremeBoats.com