

# XTREME BOATS

LIGHTER, STRONGER, FASTER  
FOR THE HIGHEST PERFORMANCE

## TOTAL PERFORMANCE REPORT

WWW.XTREMEBOATS.COM

850-547-9500

### TEST DAY DATA

Test Date	Jun-13
Test Conductor(s)	BSH
Boat Weight As Tested	725
Air Temperature	95F
Elevation	160
Wind Velocity	12
Fresh/Salt Water	Fresh
Weight of Persons during Test	180



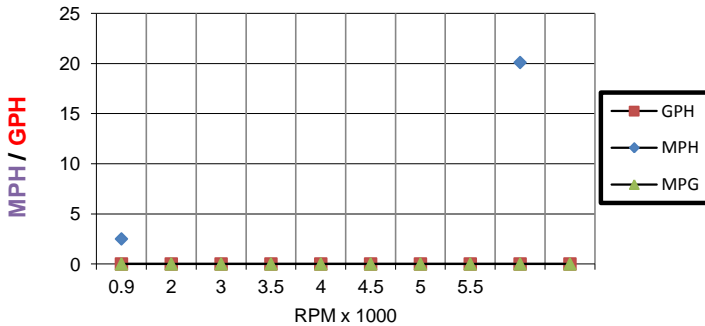
### PERFORMANCE SUMMARY

Top Speed (MPH @ RPM)	20.1
Acceleration 0 - 10 MPH (Seconds)	6.1
Acceleration 0 - 15 MPH (Seconds)	11.9
Best Fuel Efficiency (MPG @ MPH)	NA

### ENGINE SPECIFICATIONS

Engine	Mercury 9.9	EL
Horsepower	9.9	
Cylinders	2	
Gear Ratio	2.08	

### PERFORMANCE CURVE



### BOAT SPECIFICATIONS

Boat Model	River Skiff 1242 SS
Bottom Style	Flat w Vented Keels
Material	Welded Aluminum
Length	12'0"
Beam	57"
Bottom Width	42"
Hull Bottom Thickness	0.125" Aluminum (1/8")
Max HP Capacity	15 HP
Fuel Tank	Topside
Steering Type	Stick Steering
Dry Boat Weight	325
Transom Height	22"

### PERFORMANCE DATA

RPM	SPEED	FUEL	FUEL
x 1000	MPH	GPH	MPG
0.9	2.5	N/A	N/A
2		N/A	N/A
3		N/A	N/A
3.5		N/A	N/A
4		N/A	N/A
4.5		N/A	N/A
5		N/A	N/A
5.5		N/A	N/A
5.9	20.1	N/A	N/A
		N/A	N/A

### PROPELLER SPECIFICATIONS

Brand	Mercury
Model	Black Max
Material	Aluminum
Diameter/Pitch	9.5/11.5
Number of Blades	3

Trim Setting: 3rd (Highest)

Xtreme Industries 1326 Old Ridge Road Bonifay, FL 32425

Results on individual boats may vary depending on many factors, including weather and the condition of propeller, lower unit and boat bottom.

850-547-9500 XtremeBoats.com