

# XTREME BOATS

LIGHTER, STRONGER, FASTER  
FOR THE HIGHEST PERFORMANCE

## TOTAL PERFORMANCE REPORT

WWW.XTREMEBOATS.COM

850-547-9500

### TEST DAY DATA

Test Date	May-13
Test Conductor(s)	BH
Boat Weight As Tested	1795
Air Temperature	80
Elevation	160
Wind Velocity	15
Fresh/Salt Water	Fresh
Weight of Persons during Test	325



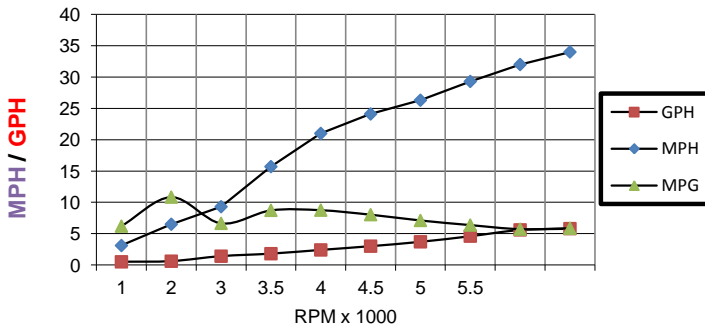
### PERFORMANCE SUMMARY

Top Speed (MPH @ RPM)	<b>34.0</b>
Acceleration 0 - 10 MPH (Seconds)	3.5
Acceleration 0 - 20 MPH (Seconds)	7.1
Acceleration 0 - 30 MPH (Seconds)	11.9
Best Fuel Efficiency (MPG @ MPH)	<b>8.8 @ 21 MPH</b>

### ENGINE SPECIFICATIONS

Engine	Mercury 60	ELPT
Horsepower	60	
Cylinders	4	
Gear Ratio	1.83	

### PERFORMANCE CURVE



### PERFORMANCE DATA

RPM x 1000	SPEED MPH	FUEL GPH	FUEL MPG
1	3.1	0.5	6.2
2	6.5	0.6	10.8
3	9.3	1.4	6.6
3.5	15.7	1.8	8.7
4	21	2.4	8.8
4.5	24.1	3	8.0
5	26.3	3.7	7.1
5.5	29.3	4.6	6.4
6	32	5.6	5.7
6.2	34	5.8	5.9

### BOAT SPECIFICATIONS

Boat Model	River Skiff 1872 CC
Bottom Style	Flat w Vented Keels
Material	Welded Aluminum
Length	19'3"
Beam	94
Bottom Width	72"
Hull Bottom Thickness	0.190" (3/16") Aluminum
Max HP Capacity	115
Fuel Tank	Topside
Steering Type	Center Console
Dry Boat Weight	925
Transom Height	22"

### PROPELLER SPECIFICATIONS

Brand	Mercury
Model	Spitfire
Material	AL
Diameter/Pitch	10.38/13
Number of Blades	4

### Performance Calculations

Propeller Slippage at WOT	17.80%
Hull Factor (Efficiency)	184.70
Higher = More Efficient	

Xtreme Industries 1326 Old Ridge Road Bonifay, FL 32425

Results on individual boats may vary depending on many factors, including weather and the condition of propeller, lower unit and boat bottom.

850-547-9500 XtremeBoats.com