

XTREME BOATS

LIGHTER, STRONGER, FASTER
FOR THE HIGHEST PERFORMANCE

TOTAL PERFORMANCE REPORT

WWW.XTREMEBOATS.COM

850-547-9500

TEST DAY DATA

Test Date	May-13
Test Conductor(s)	BH
Boat Weight As Tested	1930
Air Temperature	80
Elevation	160
Wind Velocity	15
Fresh/Salt Water	Fresh
Weight of Persons during Test	175



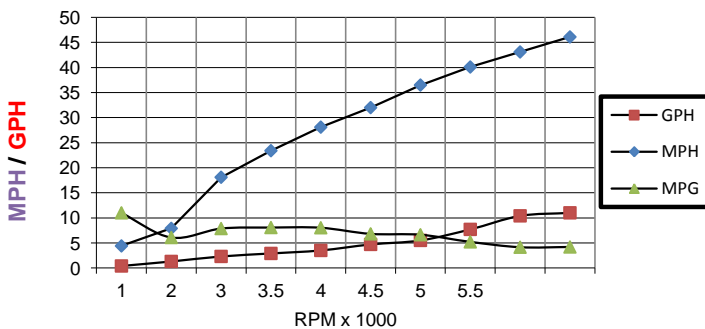
PERFORMANCE SUMMARY

Top Speed (MPH @ RPM)	46.1
Acceleration 0 - 10 MPH (Seconds)	N/A
Acceleration 0 - 20 MPH (Seconds)	4.6
Acceleration 0 - 30 MPH (Seconds)	N/A
Best Fuel Efficiency (MPG @ MPH)	8.1 @ 23.4

ENGINE SPECIFICATIONS

Engine	Mercury 115	ELPT
Horsepower	115	
Cylinders	4	
Gear Ratio	2.33	

PERFORMANCE CURVE



BOAT SPECIFICATIONS

Boat Model	River Skiff 1872 CC
Bottom Style	Flat w Vented Keels
Material	Welded Aluminum
Length	19'3"
Beam	94
Bottom Width	72"
Hull Bottom Thickness	0.190" (3/16") Aluminum
Max HP Capacity	115
Fuel Tank	Topside
Steering Type	Center Console
Dry Boat Weight	925
Transom Height	22"

PERFORMANCE DATA

RPM	SPEED	FUEL	FUEL
x 1000	MPH	GPH	MPG
1	4.4	0.4	11.0
2	7.9	1.3	6.1
3	18.1	2.3	7.9
3.5	23.4	2.9	8.1
4	28.1	3.5	8.0
4.5	32	4.7	6.8
5	36.5	5.5	6.6
5.5	40.1	7.7	5.2
6	43.1	10.4	4.1
6.2	46.1	11	4.2

PROPELLER SPECIFICATIONS

Brand	Mercury
Model	Laser II
Material	SS
Pitch	19
Number of Blades	3

Performance Calculations

Propeller Slippage at WOT	4.50%
Hull Factor (Efficiency)	186.70
Higher = More Efficient	

Xtreme Industries 1326 Old Ridge Road Bonifay, FL 32425

Results on individual boats may vary depending on many factors, including weather and the condition of propeller, lower unit and boat bottom.

850-547-9500 XtremeBoats.com