

# XTREME BOATS

LIGHTER, STRONGER, FASTER  
FOR THE HIGHEST PERFORMANCE

## TOTAL PERFORMANCE REPORT

WWW.XTREMEBOATS.COM

850-547-9500

### TEST DAY DATA

Test Date	Dec-12
Test Conductor(s)	BH
Boat Weight As Tested	915
Air Temperature	68
Elevation	160
Wind Velocity	26
Fresh/Salt Water	Fresh
Weight of Persons during Test	180



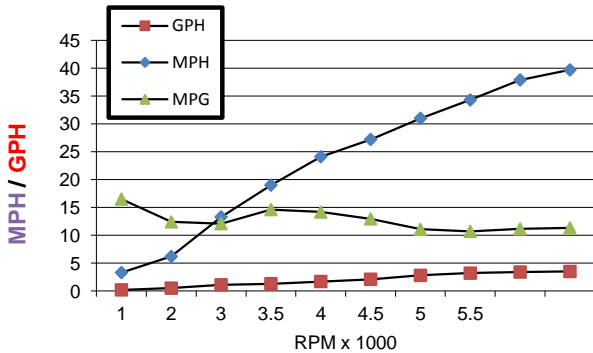
### PERFORMANCE SUMMARY

Top Speed (MPH @ RPM)	39.7 MPH
Acceleration 0 - 10 MPH (Seconds)	N/A
Acceleration 0 - 20 MPH (Seconds)	N/A
Best Fuel Efficiency (MPG @ MPH)	14.6 @ 19.0 MPH

### ENGINE SPECIFICATIONS

Engine	Mercury 40	ELPT
Horsepower	40	
Cylinders	3	
Gear Ratio	2.00	

### PERFORMANCE CURVE



### PERFORMANCE DATA

RPM	SPEED	FUEL	FUEL
x 1000	MPH	GPH	MPG
1	3.3	0.2	16.5
2	6.2	0.5	12.4
3	13.3	1.1	12.1
3.5	19.0	1.3	14.6
4	24.1	1.7	14.2
4.5	27.2	2.1	13.0
5	31.0	2.8	11.1
5.5	34.3	3.2	10.7
6	37.9	3.4	11.1
6.2	39.7	3.5	11.3

### BOAT SPECIFICATIONS

Boat Model	River Skiff 1448 SS
Bottom Style	Flat w Vented Keels
Material	Welded Aluminum
Length	14'
Beam	66"
Bottom Width	48"
Hull Bottom Thickness	0.125" Aluminum (1/8")
Max HP Capacity	40 HP
Fuel Tank	Topside
Steering Type	Stick Steering
Dry Boat Weight	400
Transom Height	22"

### PROPELLER SPECIFICATIONS

Brand	Mercury
Model	Vengeance
Material	SS
Diameter/Pitch	10.38/14
Number of Blades	3

### Performance Calculations

Propeller Slippage at WOT	3.50%
Hull Factor (Efficiency)	189.88
Higher = More Efficient	

Xtreme Industries 1326 Old Ridge Road Bonifay, FL 32425

Results on individual boats may vary depending on many factors, including weather and the condition of propeller, lower unit and boat bottom.

850-547-9500 XtremeBoats.com