

XTREME BOATS

LIGHTER, STRONGER, FASTER
FOR THE HIGHEST PERFORMANCE

TOTAL PERFORMANCE REPORT

WWW.XTREMEBOATS.COM

850-547-9500

TEST DAY DATA

| | |
|-------------------------------|--------|
| Test Date | Oct-13 |
| Test Conductor(s) | BH |
| Boat Weight As Tested | 1225 |
| Air Temperature | 75F |
| Elevation | 160 |
| Wind Velocity | 15 |
| Fresh/Salt Water | Fresh |
| Weight of Persons during Test | 225 |



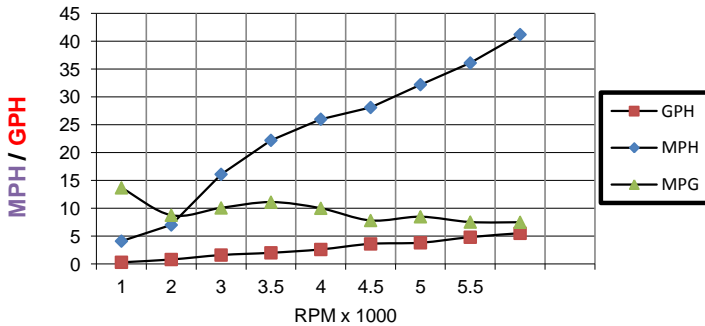
PERFORMANCE SUMMARY

| | |
|-----------------------------------|----------------|
| Top Speed (MPH @ RPM) | 41.2 |
| Acceleration 0 - 20 MPH (Seconds) | N/A |
| Acceleration 0 - 30 MPH (Seconds) | N/A |
| Best Fuel Efficiency (MPG @ MPH) | 11.1 @ 22.2MPH |

ENGINE SPECIFICATIONS

| | | |
|------------|------------|------|
| Engine | Mercury 60 | ELPT |
| Horsepower | 60 | |
| Cylinders | 4 | |
| Gear Ratio | 1.83 | |

PERFORMANCE CURVE



BOAT SPECIFICATIONS

| | |
|-----------------------|-------------------------|
| Boat Model | Classic 1454 SST |
| Bottom Style | Jet Tunnel (Run w Prop) |
| Material | Welded Aluminum |
| Length | 14'1" |
| Beam | 81" |
| Bottom Width | 54" |
| Hull Bottom Thickness | 0.125" Aluminum (1/8") |
| Max HP Capacity | 60HP |
| Fuel Tank | Topside |
| Steering Type | Stick Steering |
| Dry Boat Weight | 525 |
| Transom Height | 22" |

PERFORMANCE DATA

| RPM x 1000 | SPEED MPH | FUEL GPH | FUEL MPG |
|---------------|--------------|-------------|-------------|
| 1 | 4.1 | 0.3 | 13.7 |
| 2 | 7 | 0.8 | 8.8 |
| 3 | 16.1 | 1.6 | 10.1 |
| 3.5 | 22.2 | 2.0 | 11.1 |
| 4 | 26 | 2.6 | 10.0 |
| 4.5 | 28.1 | 3.6 | 7.8 |
| 5 | 32.2 | 3.8 | 8.5 |
| 5.5 | 36.1 | 4.8 | 7.5 |
| 6.15 | 41.2 | 5.5 | 7.5 |

PROPELLER SPECIFICATIONS

| | |
|------------------|-----------|
| Brand | Mercury |
| Model | Vengeance |
| Material | SS |
| Diameter/Pitch | 10.38/15 |
| Number of Blades | 3 |

Performance Calculations

| | |
|---------------------------|--------|
| Propeller Slippage at WOT | 13.60% |
| Hull Factor (Efficiency) | 184.30 |
| Higher = More Efficient | |

Xtreme Industries 1326 Old Ridge Road Bonifay, FL 32425

Results on individual boats may vary depending on many factors, including weather and the condition of propeller, lower unit and boat bottom.

850-547-9500 XtremeBoats.com