

XTREME BOATS

LIGHTER, STRONGER, FASTER
FOR THE HIGHEST PERFORMANCE

TOTAL PERFORMANCE REPORT

WWW.XTREMEBOATS.COM

850-547-9500

TEST DAY DATA

Test Date	Feb-13
Test Conductor(s)	BH
Boat Weight As Tested	1375
Air Temperature	65F
Elevation	160
Wind Velocity	10
Fresh/Salt Water	Fresh
Weight of Persons during Test	200



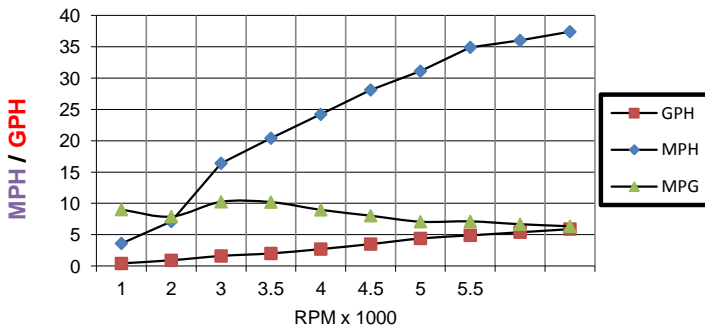
PERFORMANCE SUMMARY

Top Speed (MPH @ RPM)	37.4
Acceleration 0 - 20 MPH (Seconds)	5.9
Acceleration 0 - 30 MPH (Seconds)	7.9
Best Fuel Efficiency (MPG @ MPH)	10.2 @ 20.4 MPH

ENGINE SPECIFICATIONS

Engine	Mercury 60	ELPT
Horsepower	60	
Cylinders	4	
Gear Ratio	1.83	

PERFORMANCE CURVE



PERFORMANCE DATA

RPM x 1000	SPEED MPH	FUEL GPH	FUEL MPG
1	3.6	0.4	9.0
2	7.1	0.9	7.9
3	16.4	1.6	10.3
3.5	20.4	2.0	10.2
4	24.2	2.7	9.0
4.5	28.1	3.5	8.0
5	31.1	4.4	7.1
5.5	34.9	4.9	7.1
6	36.0	5.4	6.7
6.15	37.4	5.9	6.3

BOAT SPECIFICATIONS

Boat Model		Brute 1654 SST
Bottom Style		Modified V w Vented Tunnel
Material		Welded Aluminum
Length		16'5"
Beam		74"
Bottom Width		54"
Hull Bottom Thickness		0.125" Aluminum (1/8")
Max HP Capacity		60HP
Fuel Tank		Topside
Steering Type		Stick Steering
Dry Boat Weight		1375
Transom Height		27"

PROPELLER SPECIFICATIONS

Brand		Mercury
Model		Vengeance
Material		SS
Diameter/Pitch		10.38/15
Number of Blades		3

Performance Calculations

Propeller Slippage at WOT	21.60%
Hull Factor (Efficiency)	177.40
Higher = More Efficient	

Xtreme Industries 1326 Old Ridge Road Bonifay, FL 32425

Results on individual boats may vary depending on many factors, including weather and the condition of propeller, lower unit and boat bottom.

850-547-9500 XtremeBoats.com