

# XTREME BOATS

LIGHTER, STRONGER, FASTER  
FOR THE HIGHEST PERFORMANCE

## TOTAL PERFORMANCE REPORT

WWW.XTREMEBOATS.COM

850-547-9500

### TEST DAY DATA

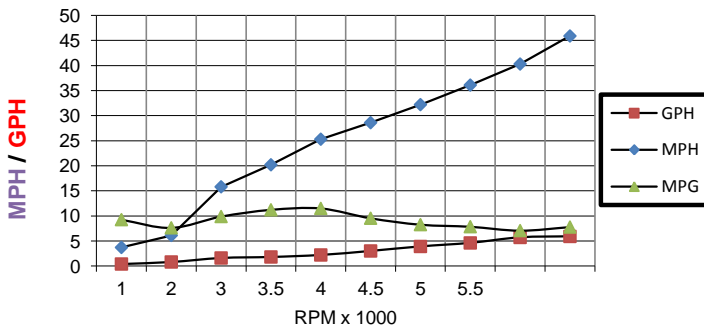
Test Date	Nov-12
Test Conductor(s)	BH/AF
Boat Weight As Tested	1455
Air Temperature	55F
Elevation	160
Wind Velocity	5
Fresh/Salt Water	Fresh
Weight of Persons during Test	325



### PERFORMANCE SUMMARY

Top Speed (MPH @ RPM)	45.9 @ 6300
Acceleration 0 - 20 MPH (Seconds)	6.3
Acceleration 0 - 30 MPH (Seconds)	9.6
Best Fuel Efficiency (MPG @ MPH)	11.5 @ 25.3 MPH

### PERFORMANCE CURVE



### PERFORMANCE DATA

RPM x 1000	SPEED MPH	FUEL GPH	FUEL MPG
1	3.7	0.4	9.3
2	6.1	0.8	7.6
3	15.8	1.6	9.9
3.5	20.2	1.8	11.2
4	25.3	2.2	11.5
4.5	28.6	3	9.5
5	32.2	3.9	8.3
5.5	36.1	4.6	7.8
6	40.3	5.7	7.1
6.3	45.9	5.9	7.8

### ENGINE SPECIFICATIONS

Engine	Mercury 60	ELPT
Horsepower	60	
Cylinders	4	
Gear Ratio	1.83	

### BOAT SPECIFICATIONS

Boat Model	Brute 1654 SC
Bottom Style	Modified V w Vented Keels
Material	Welded Aluminum
Length	16'0"
Beam	72"
Bottom Width	54"
Hull Bottom Thickness	0.125" Aluminum (1/8")
Max HP Capacity	60HP
Fuel Tank	Topside
Steering Type	Stick Steering
Dry Boat Weight	645
Transom Height	22"

### PROPELLER SPECIFICATIONS

Brand	Mercury
Model	Vengeance
Material	SS
Diameter/Pitch	10.38/15
Number of Blades	3

### Performance Calculations

Propeller Slippage at WOT	12.27%
Hull Factor (Efficiency)	202.89
Higher = More Efficient	

Xtreme Industries 1326 Old Ridge Road Bonifay, FL 32425

Results on individual boats may vary depending on many factors, including weather and the condition of propeller, lower unit and boat bottom.

850-547-9500 XtremeBoats.com