

# XTREME BOATS

LIGHTER, STRONGER, FASTER  
FOR THE HIGHEST PERFORMANCE

## TOTAL PERFORMANCE REPORT

WWW.XTREMEBOATS.COM

850-547-9500

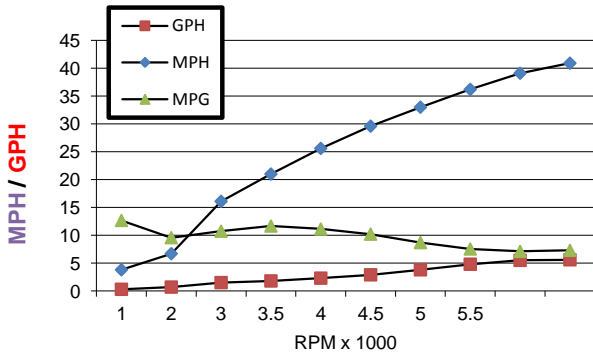
### TEST DAY DATA

Test Date	Dec-13
Test Conductor(s)	BH
Boat Weight As Tested	1375
Air Temperature	55F
Elevation	160
Wind Velocity	3
Fresh/Salt Water	Fresh
Weight of Persons during Test	180

### PERFORMANCE SUMMARY

Top Speed (MPH @ RPM)	40.9
Acceleration 0 - 20 MPH (Seconds)	4.2
Acceleration 0 - 30 MPH (Seconds)	8.1
Best Fuel Efficiency (MPG @ MPH)	11.7 @ 21 MPH

### PERFORMANCE CURVE



### PERFORMANCE DATA

RPM	SPEED	FUEL	FUEL
x 1000	MPH	GPH	MPG
1	3.8	0.3	12.7
2	6.7	0.7	9.6
3	16.1	1.5	10.7
3.5	21	1.8	11.7
4	25.6	2.3	11.1
4.5	29.6	2.9	10.2
5	33	3.8	8.7
5.5	36.2	4.8	7.5
6	39.1	5.5	7.1
6100	40.9	5.6	7.3



### ENGINE SPECIFICATIONS

Engine	Mercury 60	ELPT
Horsepower	60	
Cylinders	3	
Gear Ratio	1.83	

### BOAT SPECIFICATIONS

Boat Model	Brute 1648 SS
Bottom Style	Semi-V (Modified V)
Material	Welded Aluminum
Length	16'
Beam	74"
Bottom Width	48"
Hull Bottom Thickness	0.190" (3/16") Aluminum
Max HP Capacity	60 HP
Fuel Tank	Topside
Steering Type	Stick Steering
Dry Boat Weight	675
Transom Height	22"

No Jackplate / Mounted 3rd Hole

### PROPELLER SPECIFICATIONS

Brand	Mercury
Model	Vengeance
Material	SS
Diameter/Pitch	10.38/15
Number of Blades	3

### Performance Calculations

Propeller Slippage at WOT	12.60%
Hull Factor (Efficiency)	193.0
Higher = More Efficient	

Xtreme Industries 1326 Old Ridge Road Bonifay, FL 32425

Results on individual boats may vary depending on many factors, including weather and the condition of propeller, lower unit and boat bottom.

850-547-9500 XtremeBoats.com