

# XTREME BOATS

LIGHTER, STRONGER, FASTER  
FOR THE HIGHEST PERFORMANCE

## TOTAL PERFORMANCE REPORT

WWW.XTREMEBOATS.COM

850-547-9500

### Test Day Data

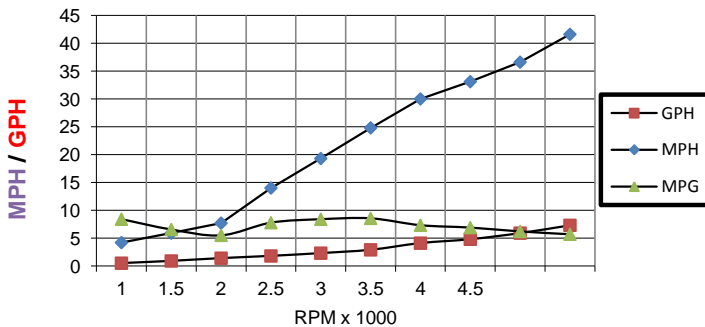
Test Date	Oct-15
Test Conductor(s)	BH
Boat Weight As Tested	1755
Air Temperature	60
Elevation	160
Wind Velocity	3
Fresh/Salt Water	Fresh
Weight of Persons during Test	195



### PERFORMANCE SUMMARY

Top Speed (MPH @ RPM)	41.6
Acceleration 0 - 20 MPH (Seconds)	3.7
Acceleration 0 - 30 MPH (Seconds)	5.7
Best Fuel Efficiency (MPG @ MPH)	8.6 @ 24.8MPH

### PERFORMANCE CURVE



### PERFORMANCE DATA

RPM x 1000	SPEED MPH	FUEL GPH	FUEL MPG
1	4.2	0.5	8.4
1.5	5.9	0.9	6.6
2	7.7	1.4	5.5
2.5	14	1.8	7.8
3	19.3	2.3	8.4
3.5	24.8	2.9	8.6
4	30	4.1	7.3
4.5	33.1	4.8	6.9
5	36.6	5.9	6.2
5.75	41.6	7.3	5.7

### ENGINE SPECIFICATIONS

Engine	Mercury 75	ELPT
Horsepower	75	
Cylinders	4	
Gear Ratio	2.07	

### BOAT SPECIFICATIONS

Boat Model	XT 162 SS
Bottom Style	Full V w Vented Keels
Material	Welded Aluminum
Length	16'2"
Beam	88"
Bottom Width	60"
Hull Bottom Thickness	0.190" Aluminum (3/16")
Max HP Capacity	90HP (w Hydraulic)
Fuel Tank	Topside
Steering Type	Stick Steering
Dry Boat Weight	775
Transom Height	22"

### PROPELLER SPECIFICATIONS

Brand	Mercury
Model	Vengeance
Material	SS
Diameter/Pitch	13.25/16
Number of Blades	3

### Performance Calculations

Propeller Slippage at WOT	1.50%
Hull Factor (Efficiency)	201.20
Higher = More Efficient	

Xtreme Industries 1326 Old Ridge Road Bonifay, FL 32425

Results on individual boats may vary depending on many factors, including weather and the condition of propeller, lower unit and boat bottom.

850-547-9500 XtremeBoats.com